

NORTHFIELD MEWS

A Luxury Townhome Rental Community

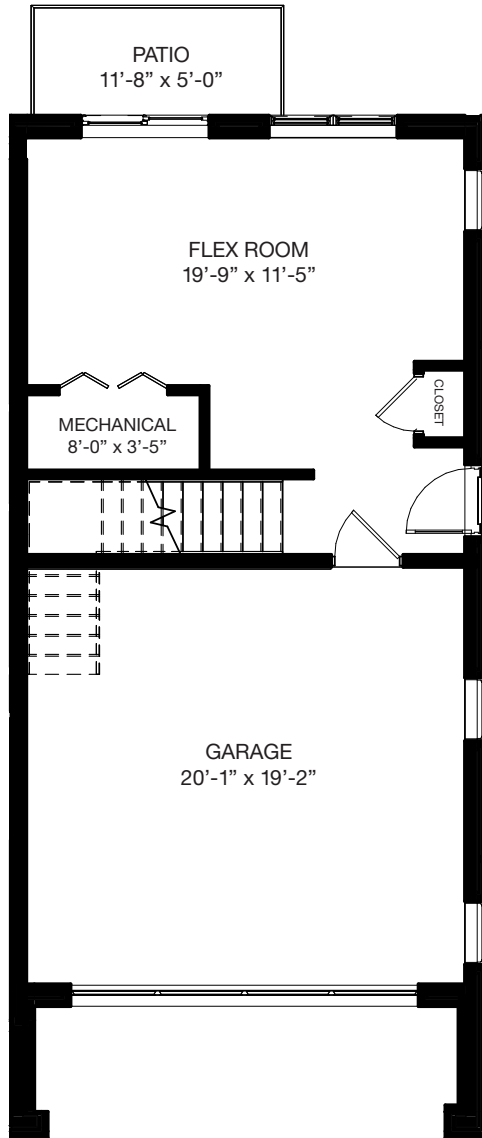


EDWARD R. JAMES COMPANIES
EXCEPTIONAL HOMES... EXCEPTIONAL PLACES

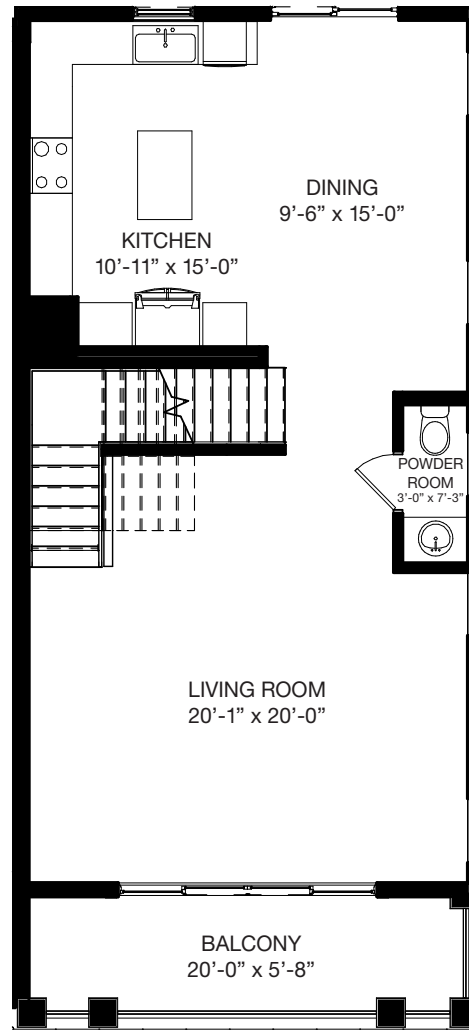
C UNIT

NORTHFIELD MEWS | C UNIT

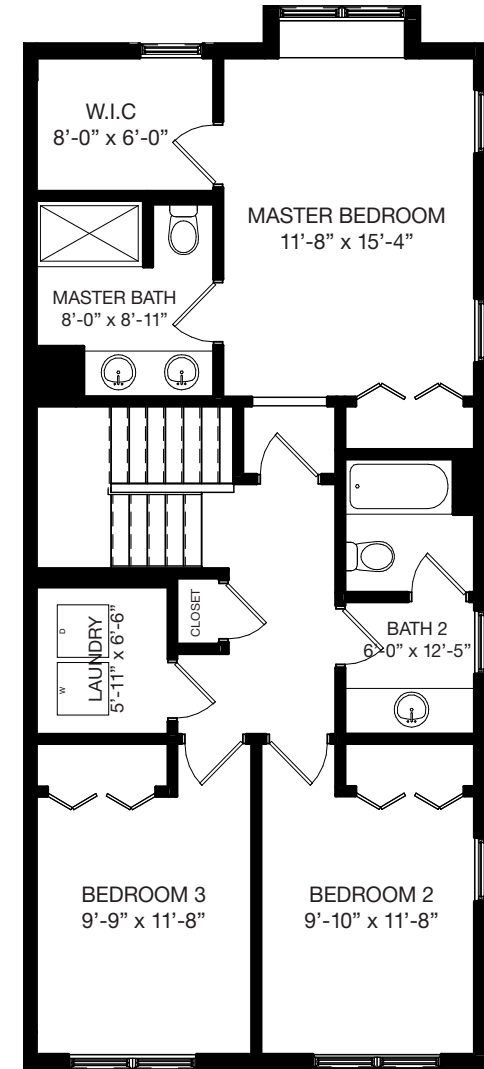
3 Bedroom, 2.5 Bath | 2 Car Garage | Flex Room, Laundry | Patio, Balcony



LOWER LEVEL



MAIN LEVEL



UPPER LEVEL

Lower Level	374
Main Level	847
Upper Level	986
Total SQ. FT.	2,208

Plan, materials, prices and specifications are based on availability and subject to change without notice. Architectural, structural and other revisions may be made as are deemed necessary by the developer, builder, architect or as may be required by law. Images used for illustrative purposes only. ALL DIMENSIONS ARE APPROXIMATE.



NORTHFIELD MEWS

LUXURY APARTMENT HOME FEATURES AND FINISHES

- LUXURY APARTMENT HOMES RANGING FROM 1,947 TO 2,430 SQUARE FEET OF SPACE, OVER THREE LEVELS.
- 9 FLOOR PLANS TO CHOOSE FROM, OFFERING 2-3 BEDROOMS AND 2-½ BATHS, BALCONIES, DECKS AND OR PATIOS, PER PLAN.
- RENT INCLUDES ATTACHED GARAGES OFFERING 1 OR 2 CAR PARKING, WITH ADDITIONAL APRON AND GUEST PARKING, PER PLAN.
- LUXURY KITCHENS FEATURE STAINLESS-STEEL APPLIANCES (REFRIGERATOR, MICROHOOD, DISHWASHER, GAS RANGE, DISPOSAL); WHITE FULL OVERLAY KITCHEN CABINETS WITH PULLOUT TRASH BIN AND 42" UPPER CABINETS; AND 3CM QUARTZ COUNTERTOPS.
- EACH APARTMENT HOME IS EQUIPPED WITH A WASHER AND DRYER, PER PLAN.
- LUXURY FINISHES INCLUDE 5-¼" PAINTED CROWN MOLDING THROUGHOUT THE FIRST LEVEL AND 4-¼" BASEBOARD WITH 3-½" PAINTED CASING.
- FLOORING FEATURES HIGH-DENSITY 7" SYNTHETIC PLANK FLOORING ON MAIN FLOOR; AND CARPETING IN BEDROOMS, HALLWAYS, FLEX ROOM, AND STAIRS.
- MASTER BATHROOMS OFFER DOUBLE BOWL VANITIES WITH 3CM QUARTZ COUNTERTOPS AND UNDER-MOUNT WHITE SINKS; 3/8" FRAMELESS BYPASS SHOWER DOOR WITH PANEL; AND FULL HEIGHT CERAMIC WALL TILE SURROUND.
- UTILITIES INCLUDE HIGH-EFFICIENCY GAS HEATING AND VENTILATION; CENTRAL AIR CONDITIONING; (4) TV/CABLE JACKS AND (4) CAT 6 INTERNET/TELEPHONE JACK; AND A GAS CONNECTION FOR OUTDOOR GRILLING.